



NC690/NC690W User Manual

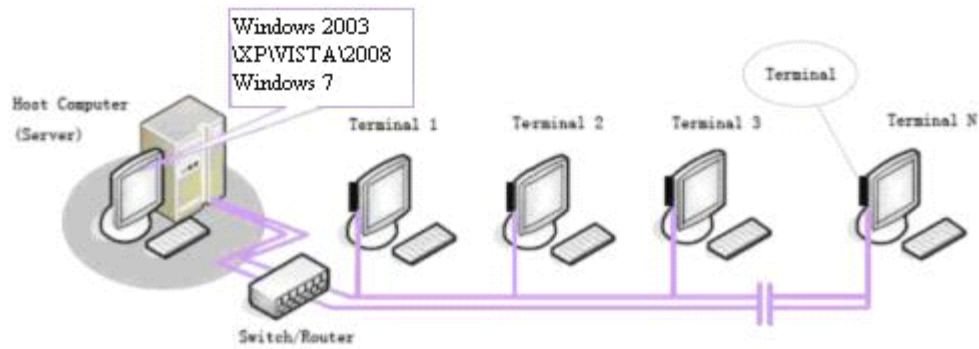
Contents

Network Terminal Introduction.....	2
Quick installation guide.....	3
Step 1: Install software on the host computer.....	3
Step 2: Add users for terminals.....	7
Step 3: Complete the network terminal physical connection.....	9
Step4: Start up the network terminal.....	9
A: System start up.....	9
B: Default system screen.....	10
C: Connect host.....	11
1、 Add new connection.....	11
2、 Edit connection.....	14
3、 Connect host.....	14
D、 Control Panel.....	15
1、 Connect to a wireless network (Only NC690W).....	15
2、 Network Settings.....	16
3、 Screen Resolution Settings.....	18
4、 MAC Address Settings.....	19

Network Terminal Introduction

Through the LAN, make a number of network terminals to share a high-performance computer.

Network diagram is as follows:



Interface Features:



Quick installation guide

Step 1: Install software on the host computer

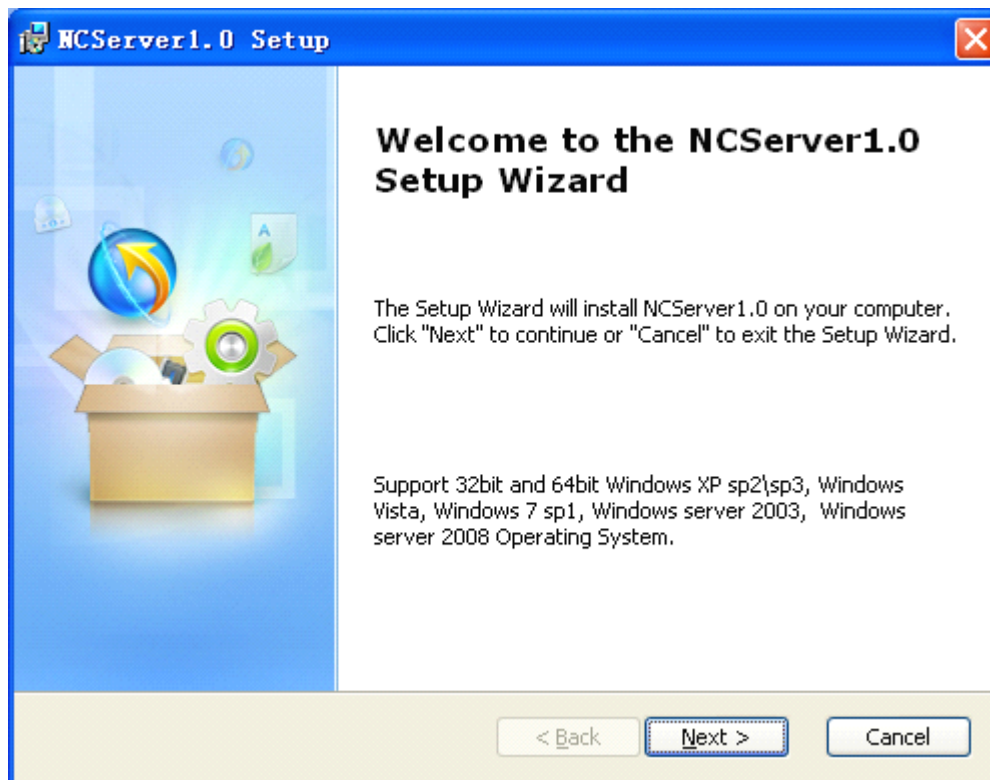
Insert the CD into the CDROM on the host computer, wait for the CD to autorun or double-click "autorun.exe" in the CD root directory. Follow these steps to install: (**Note:** In order to ensure successful installation, close the security software when install.)



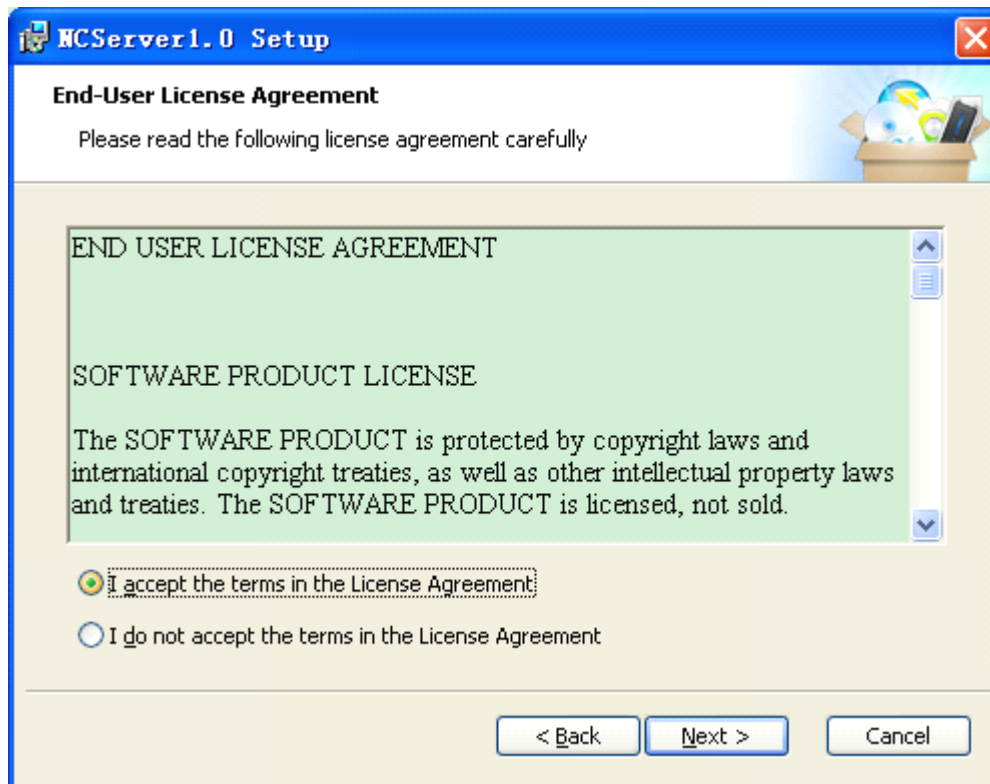
Click "NC690/NC690W";



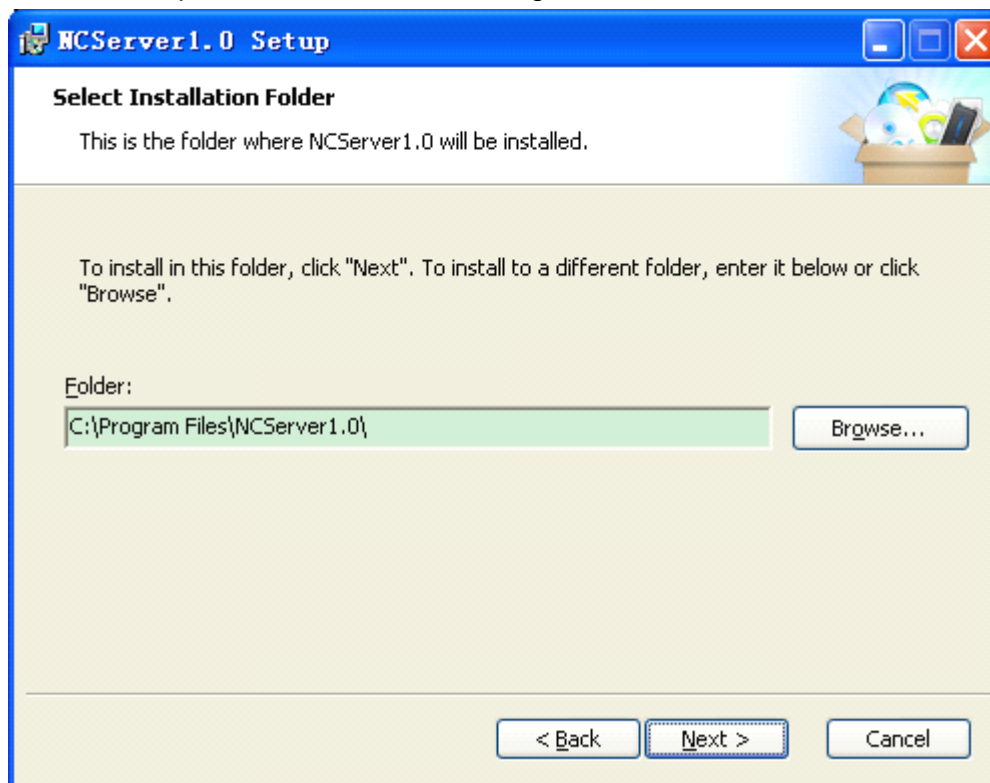
Click "Driver Install";



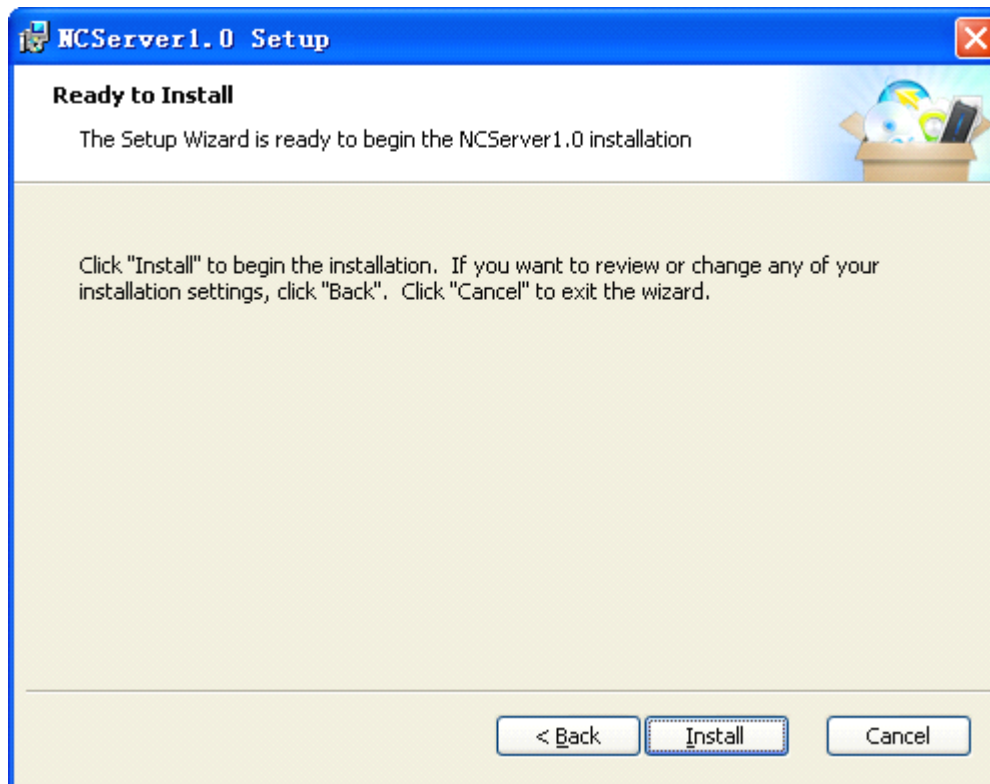
Click "Next";



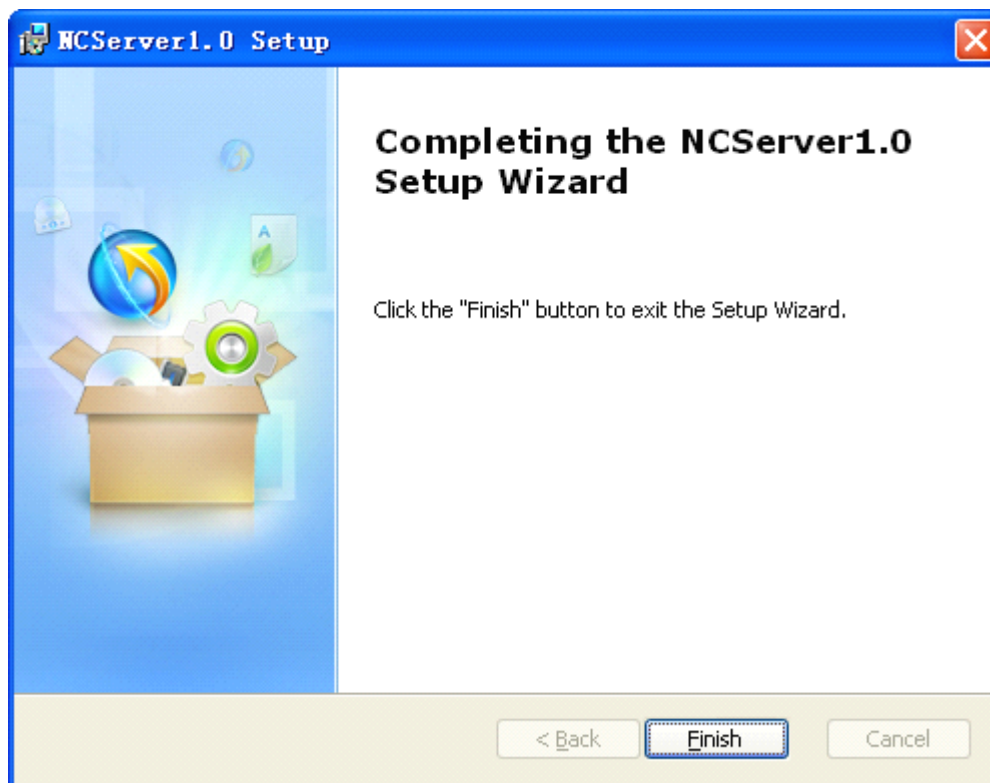
Select "I accept the terms in the License Agreement", then click "Next";



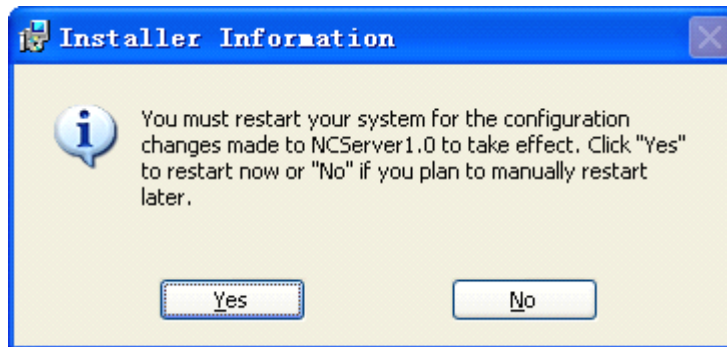
Click "Next"(Default installation), also can change the installation directory;



Click "Install";



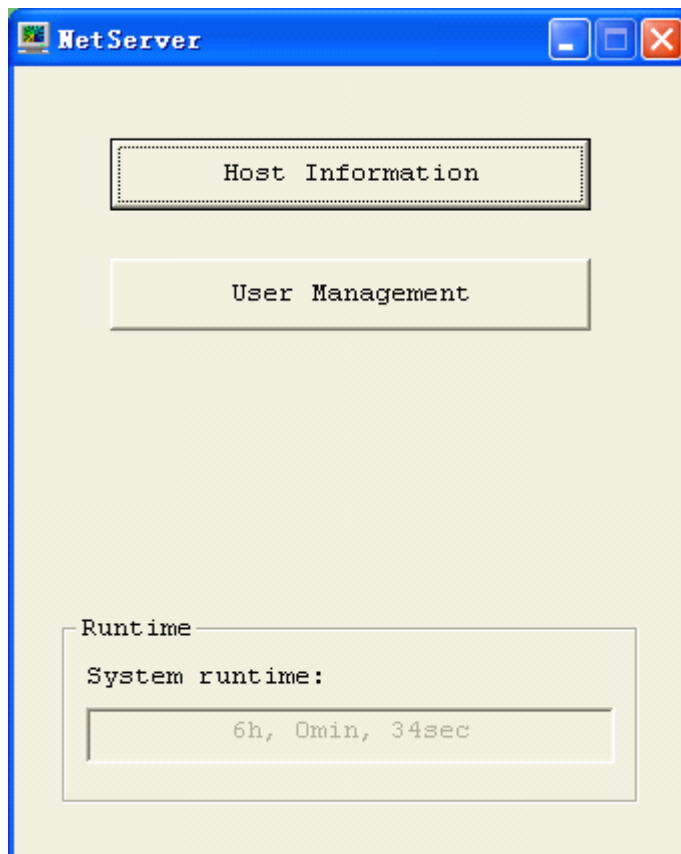
Click "Finish";



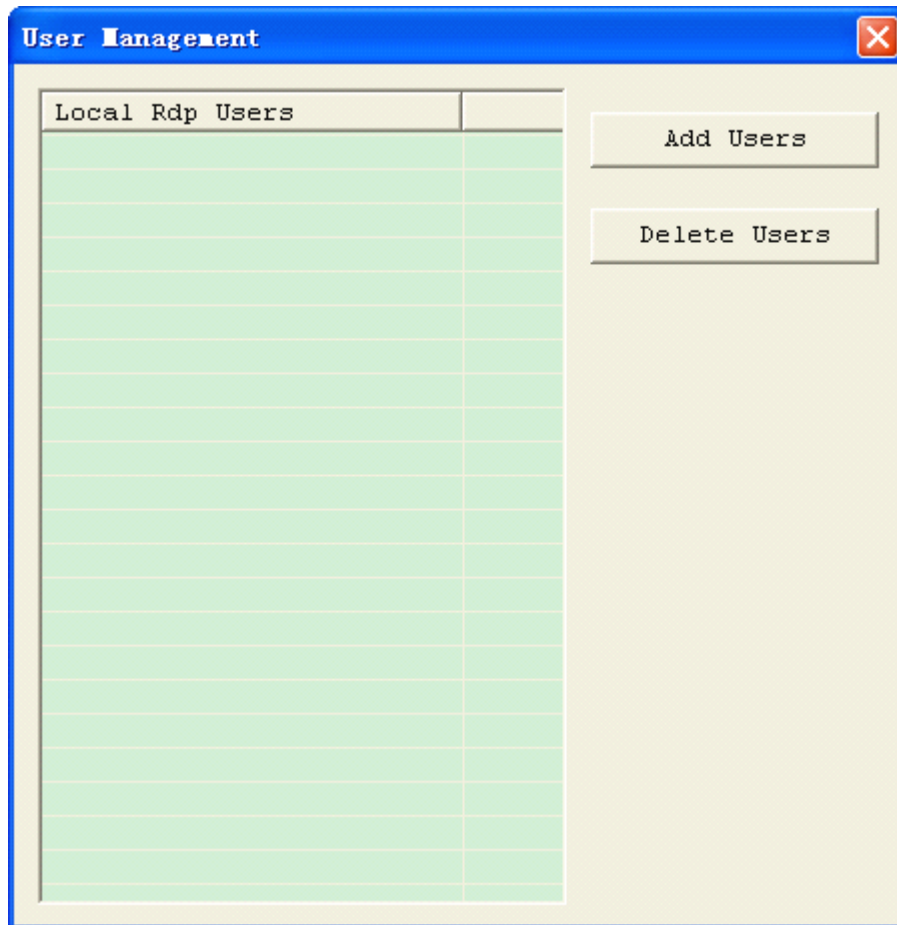
Click "Yes", the installation is successful after restart the computer.

Step 2: Add users for terminals

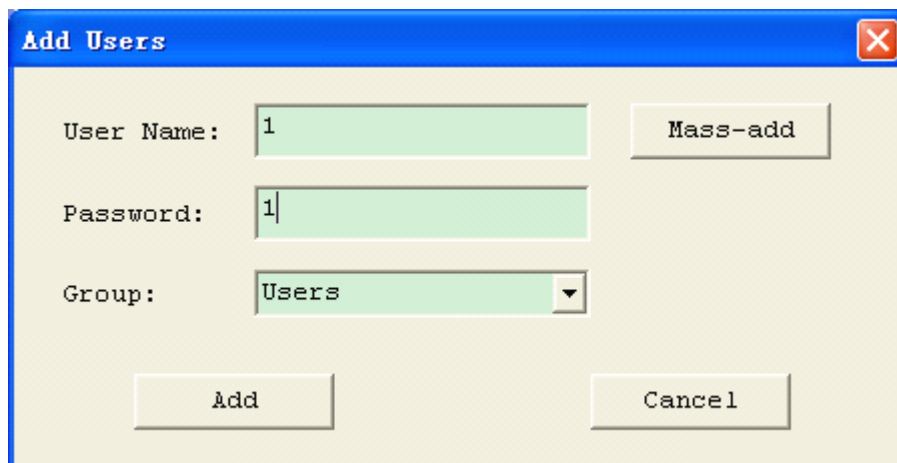
Double-click "NetServer.exe" on the host computer's desktop;



Click "User Management";



Click "Add Users";



Click "Add", as above, it will add a user "1", the password is "1".
Also can mass add, click "Mass-add";

Add Users

User Name:

☒ From to Wildcard Length: (1-3)

☐ From to (Case sensitive)

...
...
user10

Password:

Group: ▼

Click "Add", as above, it will add 10 users, from "user01" to "user10", the uniform password is "1".

Step 3: Complete the network terminal physical connection

Make keyboard, mouse, monitor, cable and power supply etc connect with terminal.

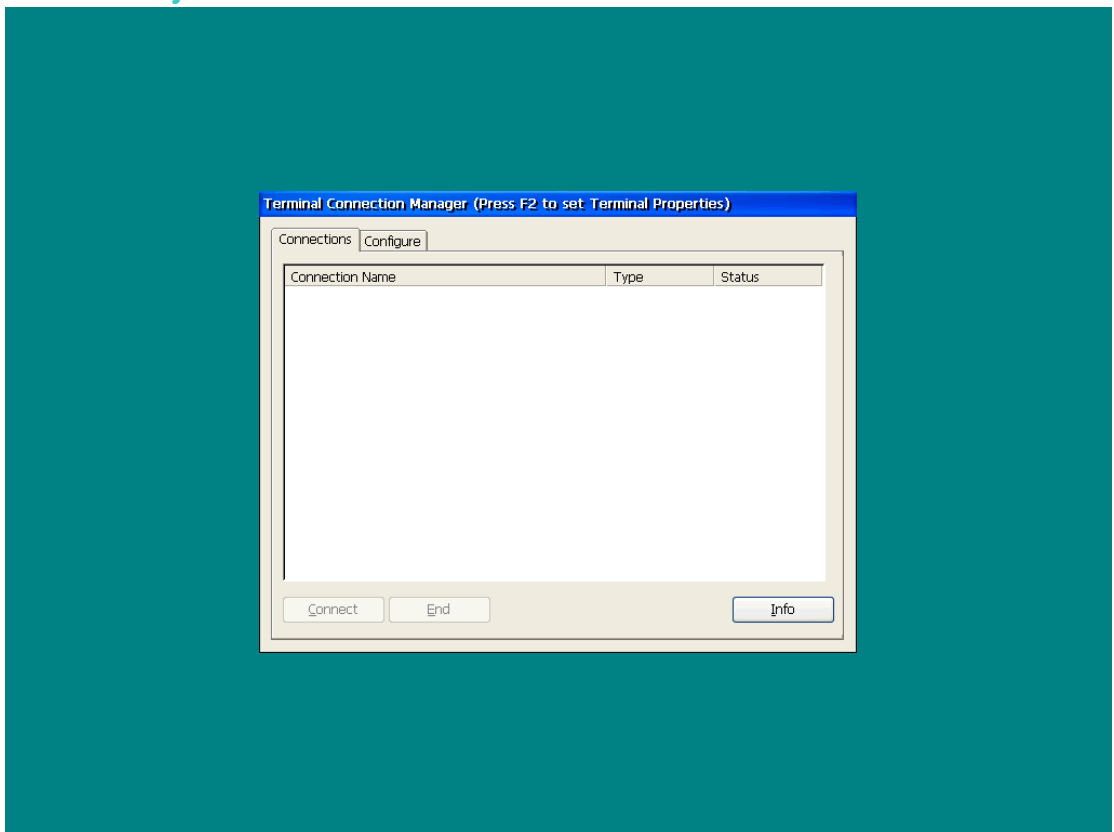
Step4: Start up the network terminal

Complete and confirm that all cable connections are connected, open terminal power switch. According to the following steps to configure the network terminal.

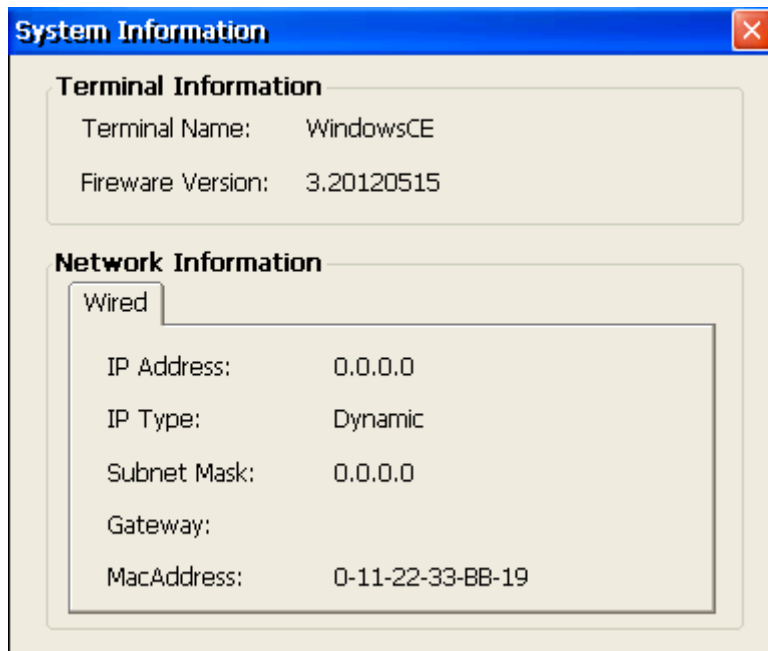
A: System start up



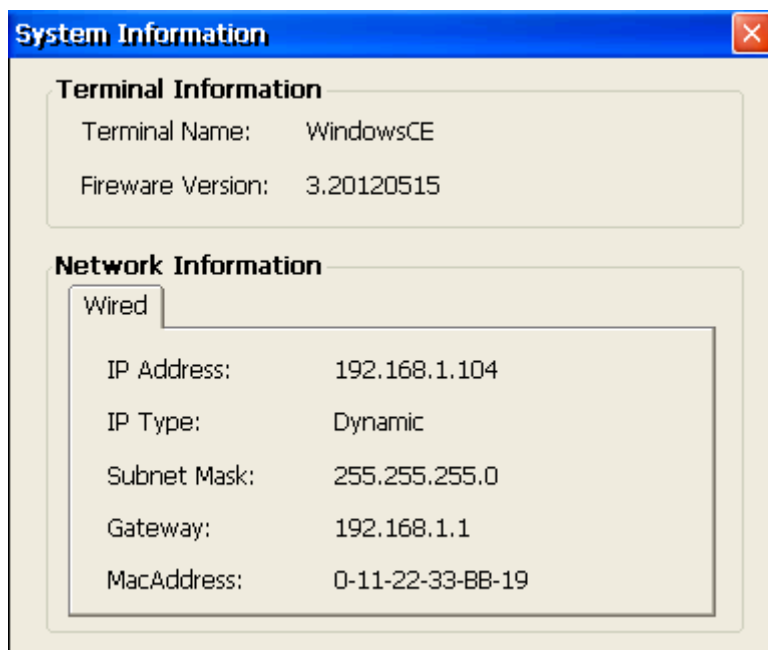
B: Default system screen



Click "Info" to view terminal information;



(No network)



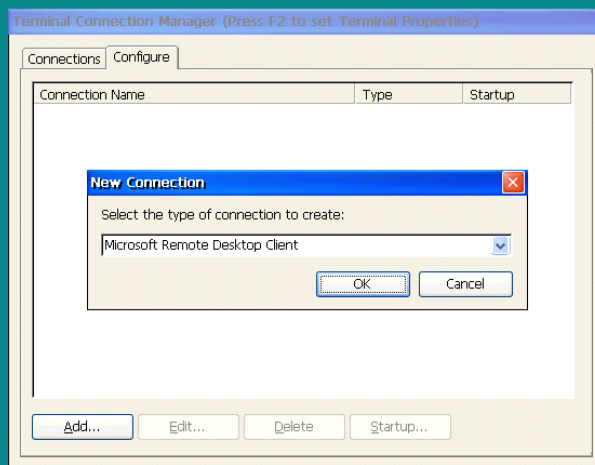
(Connected to network)

C: Connect host

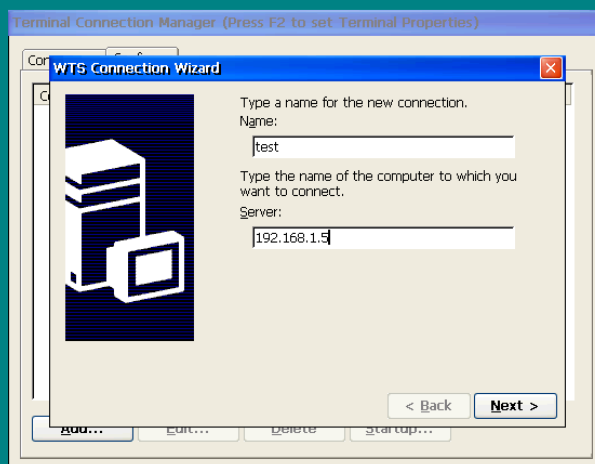
When the terminal startup and connected to network, you can connect to host.

1、Add new connection

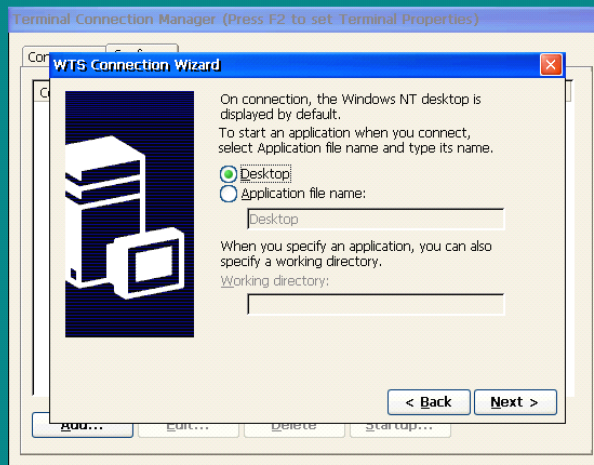
First need to add a new connection. Click the "Configure" tab on the "Terminal Connection Manager", then click "Add ...";



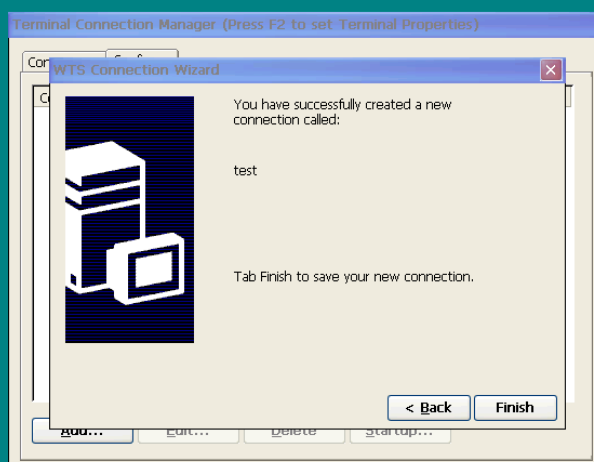
Select "Microsoft Remote Desktop Client", click "OK";



Type a name and host's IP for the new connection, click "Next";



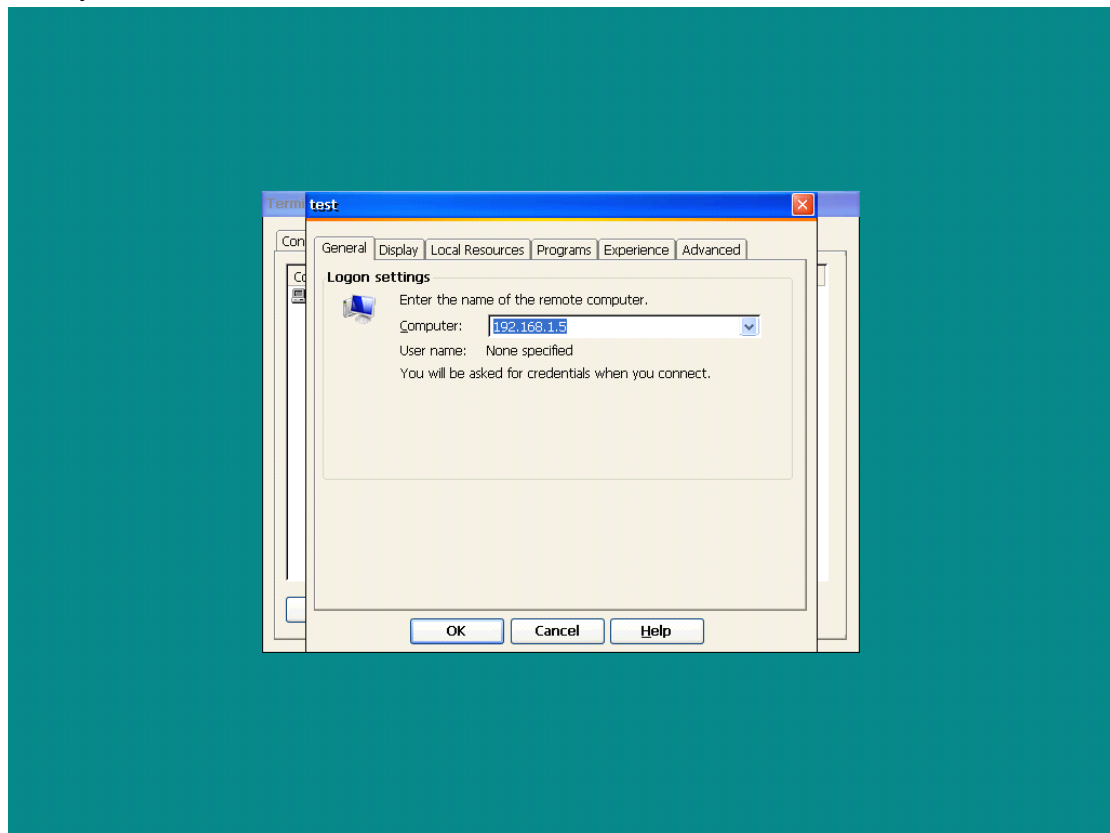
- 1) On connection, the Windows NT desktop is displayed by default.
 - 2) To start an application when you connect, select Application file name and type its name. When you specify an application, you can also specify a working directory.
- Select "Desktop" by default, click "Next";



Click "Finish" to save your new connection.

2、 Edit connection

Then you can further edit the connection. Select the connection and click "Edit...";



With the following steps, you can change some settings to log into host.

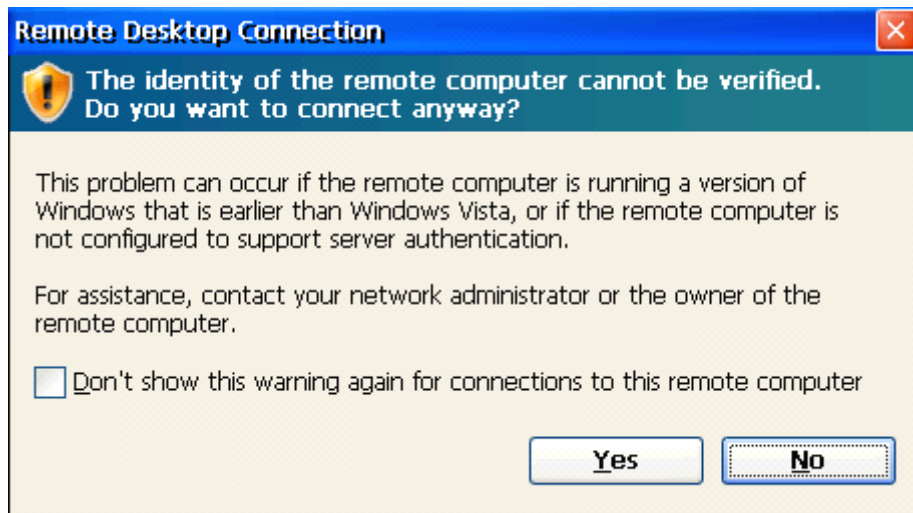
For example, if you want to display USB disk, select "Local Resources" -> choose "Drives", then you will see the USB disk connected with terminal in terminal device.

3、 Connect host

Click the "Connections" tab on the "Terminal Connection Manager", select the connection, then click "Connect" to log into host.

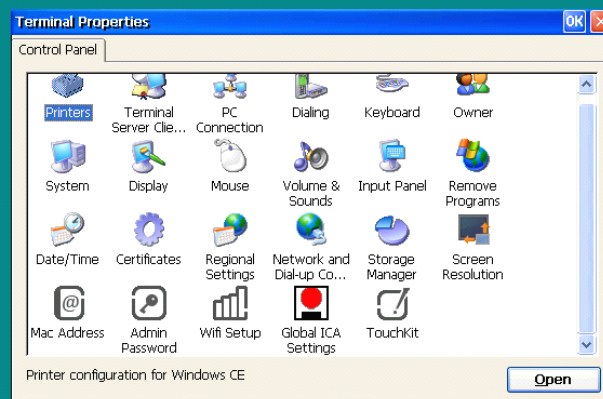
Note:

If the remote computer is running a version of Windows that is earlier than Windows Vista, or if the remote computer is not configured to support server authentication, it will pop up the following warning. Choose "Don't show this warning again for connections to this remote computer" and click "Yes".



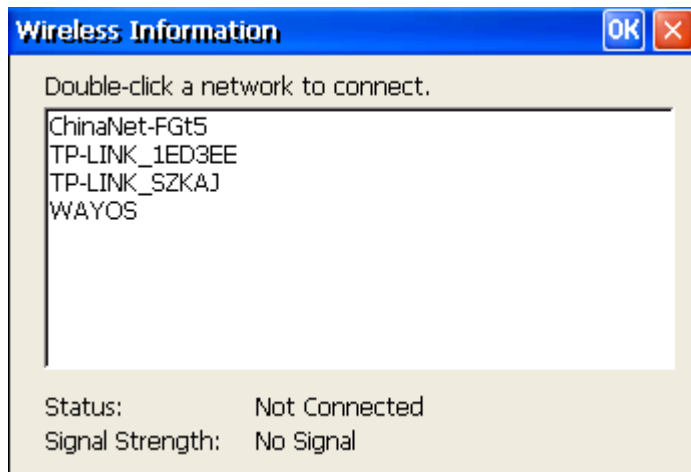
D、Control Panel

Press F2 into control panel on the "Terminal Connection Manager", need to enter the admin password, the default password is "123".

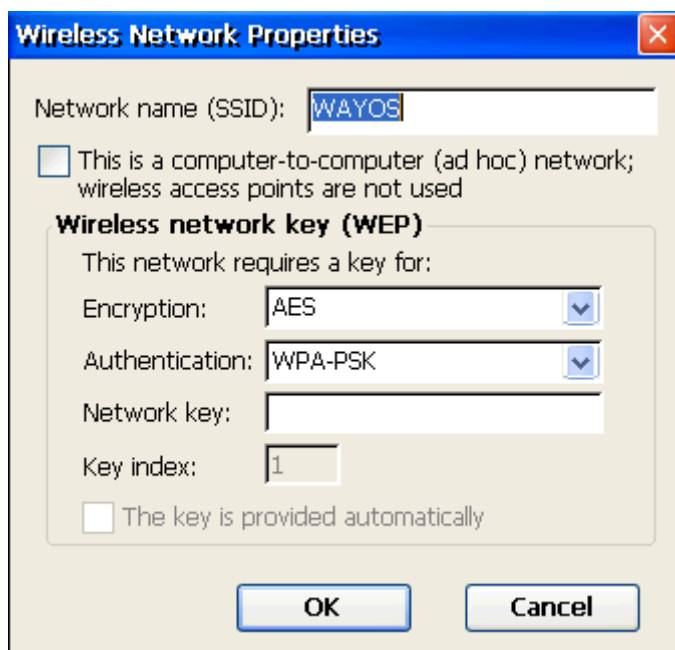


1、Connect to a wireless network (Only NC690W)

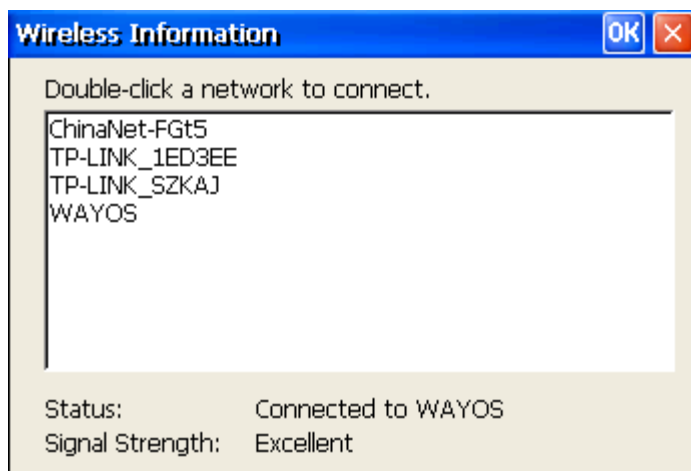
Double-click "Wifi Setup" on the control panel;



Double-click a network to connect;



Set and click "OK", it will connect successfully. It will show "Connected to ..." in status.



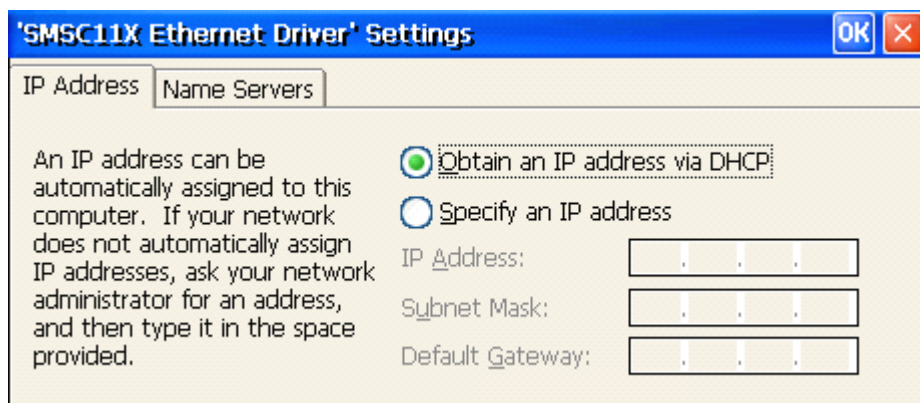
2、Network Settings

Double-click "Network and Dial-up Connections" on the control panel;



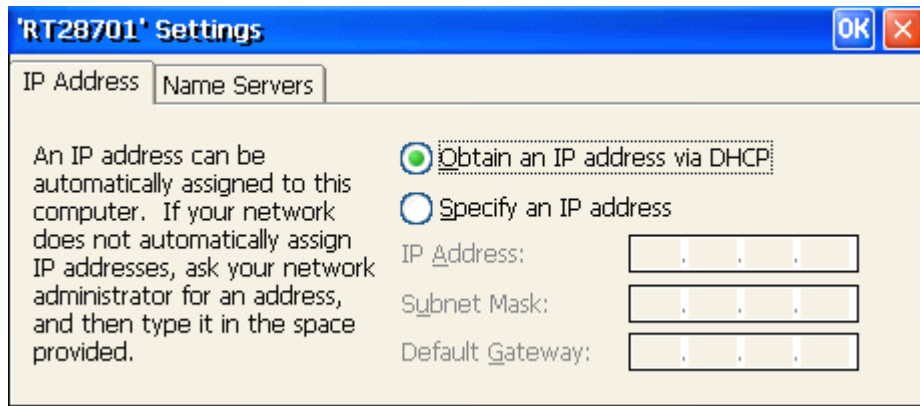
1) Cable network

Double-click "SMSC91181", configure the IP address, click "OK" after done.



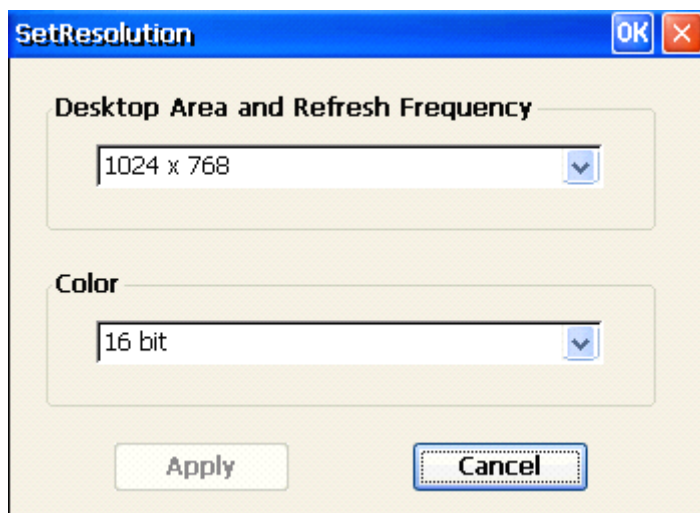
2) Wireless network (Only NC690W)

Double-click "RT28701", configure the IP address, click "OK" after done.

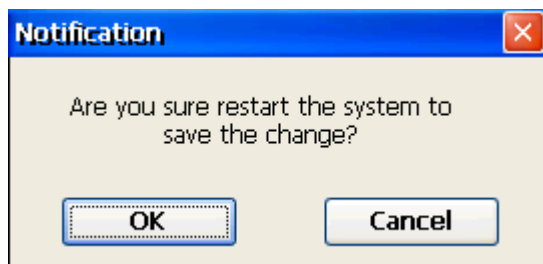


3、Screen Resolution Settings

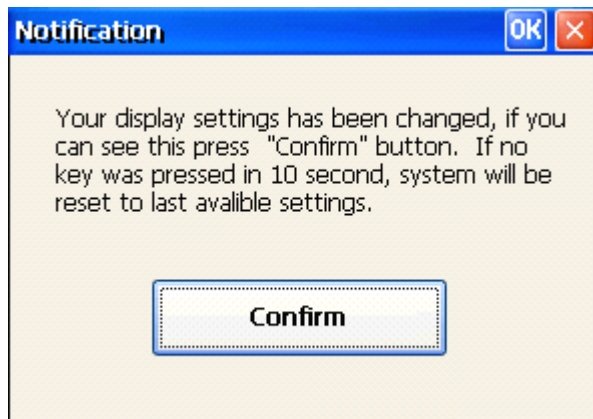
Double-click "Screen Resolution" on the control panel;



Select a suitable resolution and click "Apply", need to restart to make it effect.



Pls click "Confirm" after resolution change and terminal restart. If you don't click "Confirm", then terminal will restart and the resolution will return back to previous.



4、MAC Address Settings

If there are two terminals have same MAC address in the LAN, one of the terminals will be unable to connect to the LAN. Need to modify the terminal's MAC address.

Double-click "Mac Address" on the control panel, click "Generate" to randomly generate a MAC address, then click "Save", need to restart to make it effect.

